



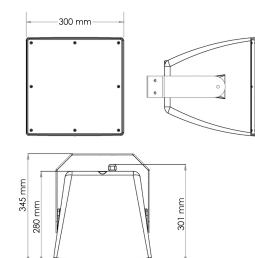
The iD-MH Series are high SPL two-way structured plastic cabinet systems with weather and UV resistant housing, designed for medium to long distance sound reinforcement applications.

- Strong plastic cabinet, weather and UV resistant (IP56)
- High SPL output (8ohms/100V)
- Horn loaded HF coaxially mounted with the LF driver providing 100°H x 100°V (iD-MH158 WH) or 80°H x 80°V (iD-MH1512 WH) accurate dispersion.

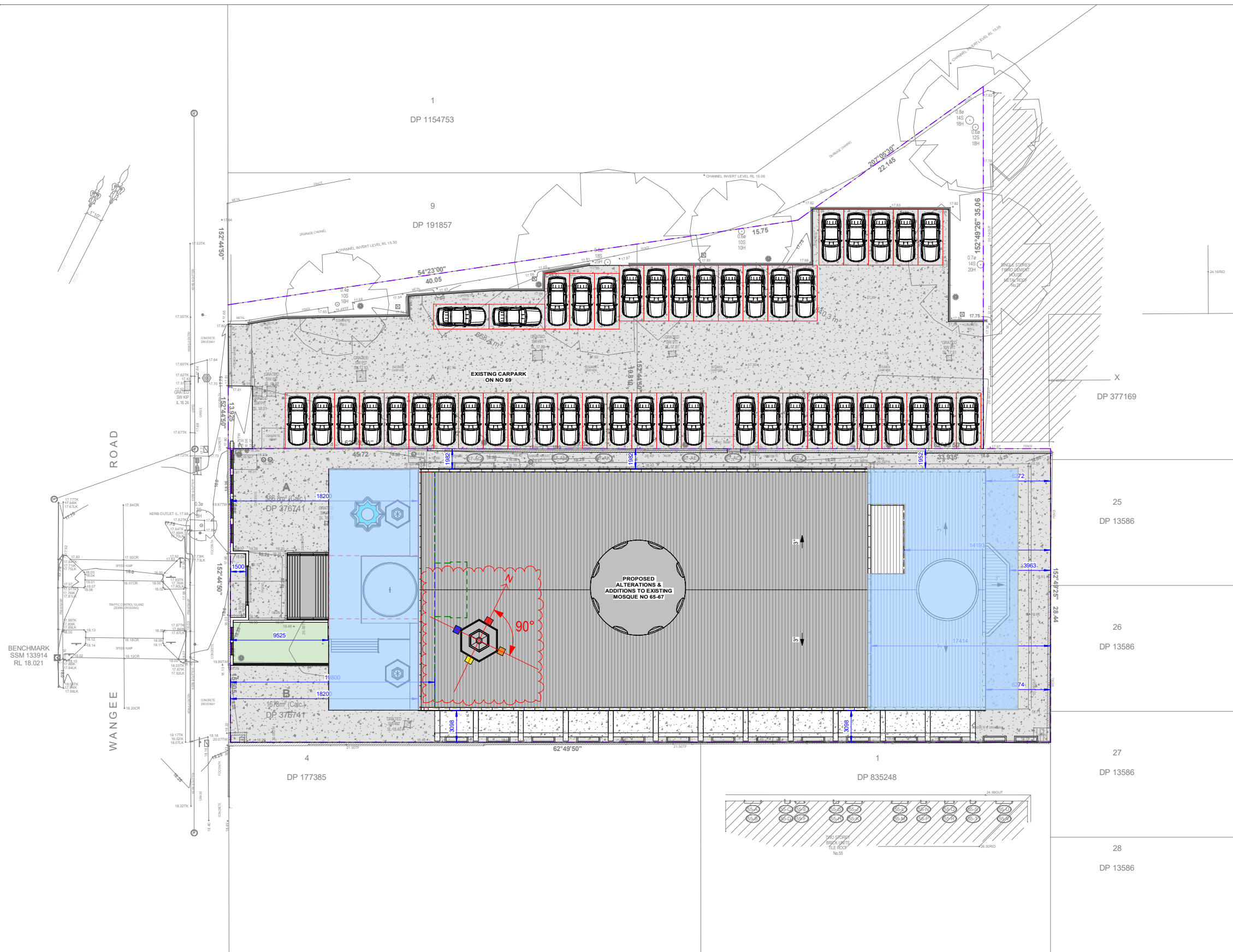
Suitable for long/middle sound reinforcement distances such as: public venues, eg. stadiums, factories, schools and sports grounds.

Description and specifications are correct at time of printing. Maybe subject to change without notice.

iD-MH158 WH



WEST-FACING SPEAKER
92 dBA MAXIMUM
APPROXIMATELY 18m
FROM NATURAL GROUND

[illegible]

Project No: 0836
Checked: Drawn:
PD LJ
Scale@A3: 1:200
Date: 09/10/2024



Drawing Title:
NOTIFICATION PLAN

A

ADS ASSOCIATES PTY LTD
1/7 Murray Rose Avenue, Sydney Olympic Park NSW 2127
P: 02 9763 1888
info@adsarchitects.com | www.adsarchitects.com
ABN: 99 674 437 444
NSW Nominated Architect Pavlo Doroch 9170
Design Practitioner Pavlo Doroch DEP0000211



The iD-MH Series are high SPL two-way structured plastic cabinet systems with weather and UV resistant housing, designed for medium to long distance sound reinforcement applications.

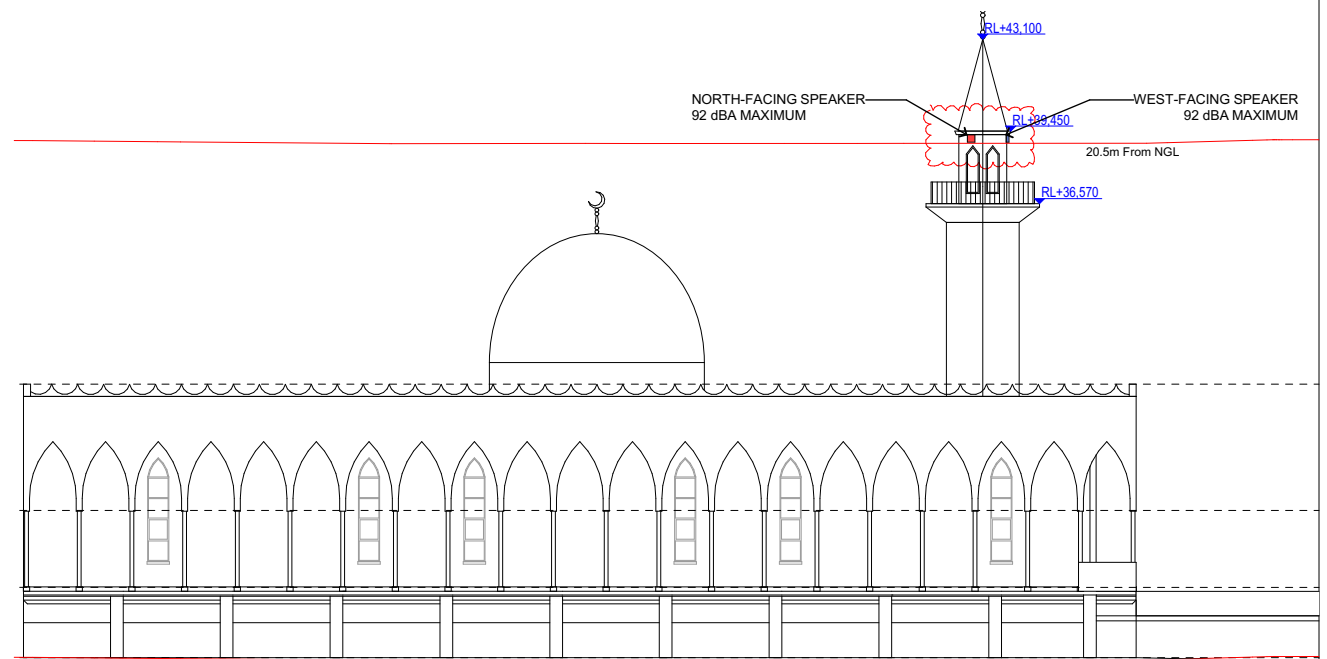
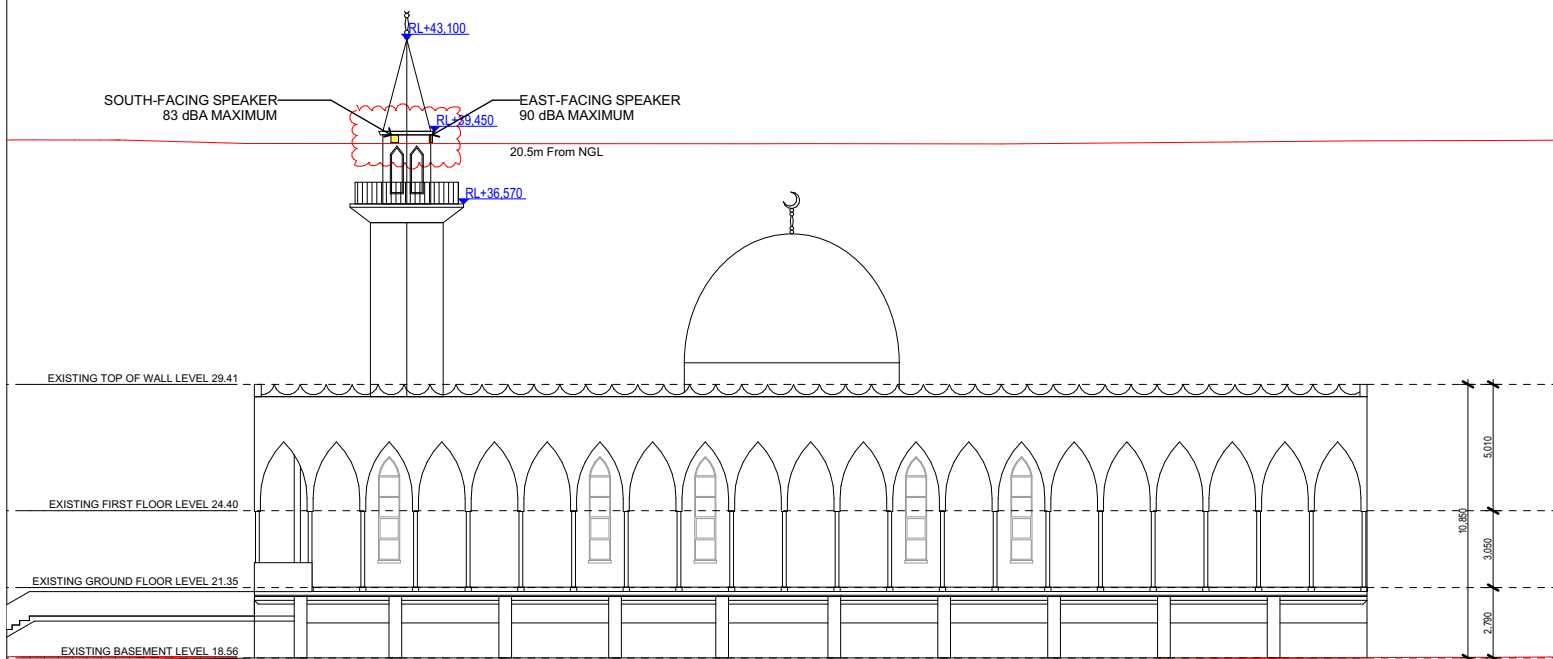
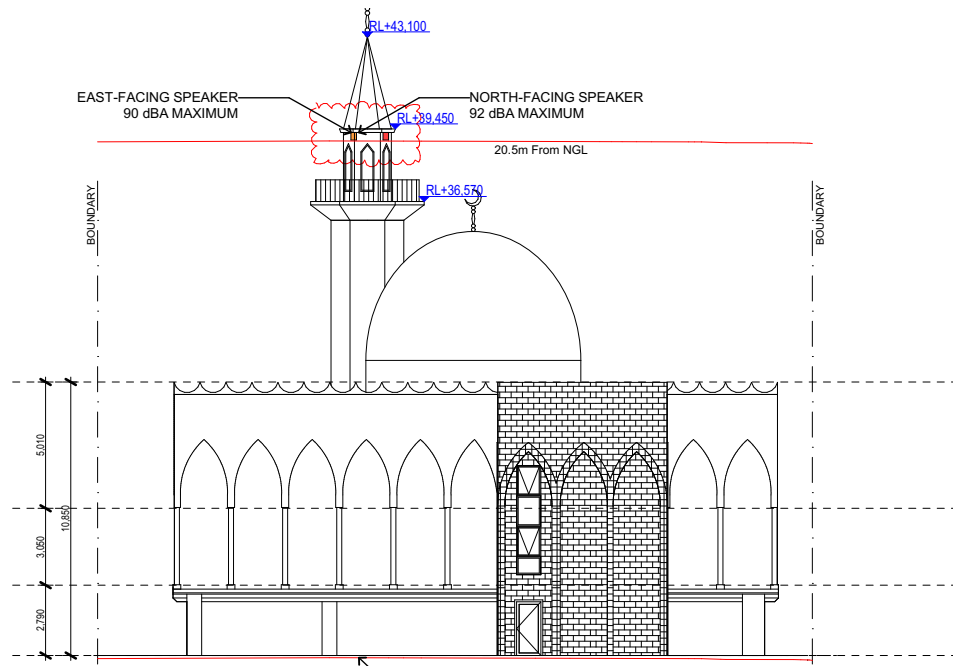
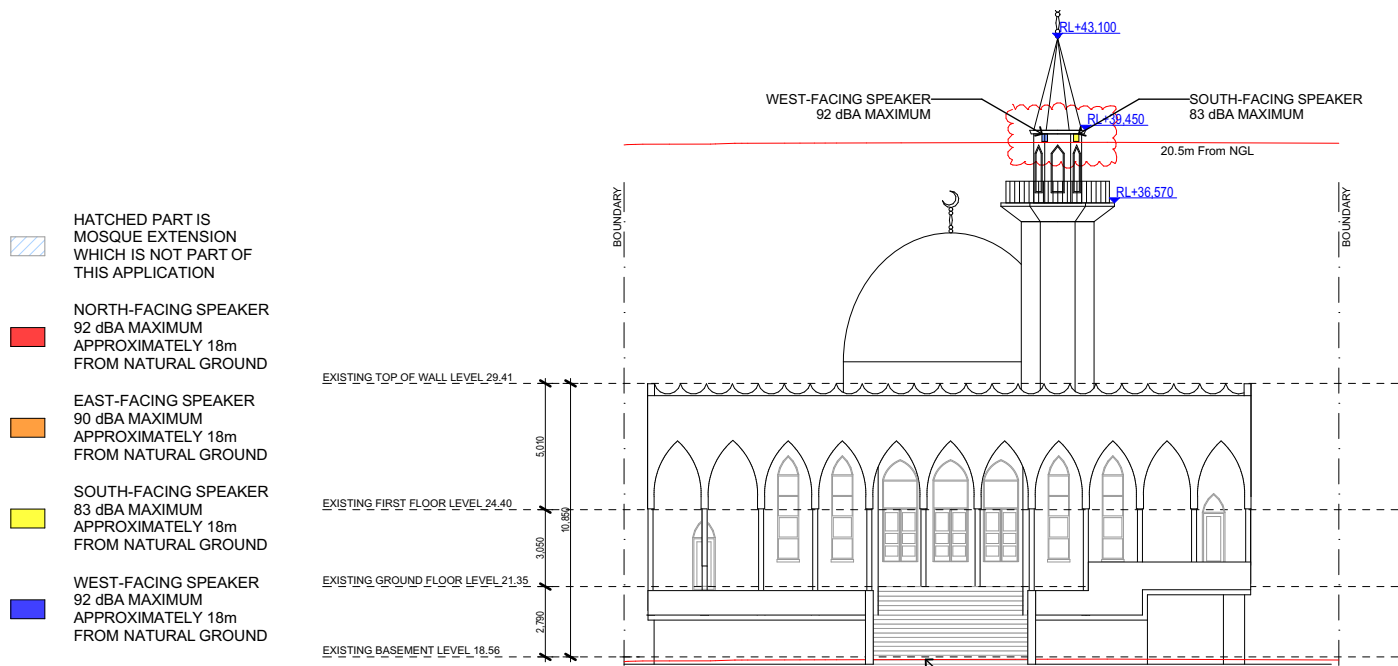
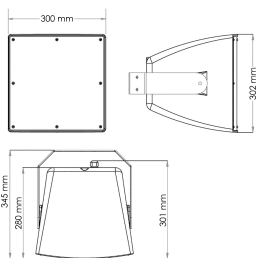
- Strong plastic cabinet, weather and UV resistant (IP56)
- High SPL output (8ohms/100V)
- Horn loaded HF coaxially mounted with the LF driver providing 100°H x 100°V (ID-MH158 WH) or 80°H x 80°V (ID-MH1512 WH) accurate dispersion.

Suitable for long/middle sound reinforcement distances such as: public venues, eg. stadiums, factories, schools and sports grounds.

MODEL		ODM155 WH
Frequency response	80Hz 18dB ±3dB	
Drivers	1x 8" (200mm) 2" voice coil LF, 1x 1" (25mm) 1/4" voice coil HF	
Power	100V Line Input 37.5W/150V 6A / 150W	
Sensitivity	96dB 1 watt/1 meter	
Maximum SPL	117dB continuous, 125dB peak	
Impedance	16Ω nominal	
Dispersion (6dB)	100° x 100°	
Crossover	2.5kHz passive	
IP rating	IP56 (Applicable Standards – EN 60529)	
Dimensions (W x H x D)	300 x 302 x 334 mm	
Weight	10kg	
U-Brackets (included)	Powder-coated 316 stainless steel	

Dimensions

iD-MH158 WH



ADS ASSOCIATES PTY LTD
1/7 Murray Rose Avenue, Sydney Olympic Park NSW 2127
P: 02 9763 1888
info@adsarchitects.com | www.adsarchitects.com
ABN: 99 674 437 444
NSW Nominated Architect Pavlo Doroch 9170
Design Practitioner Pavlo Doroch DEP0000211



A	A	ISSUE FOR DA	LJ

1. ALL DIMENSIONS AND SIZES ARE IN MILLIMETRES. DO NOT SCALE DRAWINGS. PREFERENCES OF DIMENSIONED MESUREMENT TO BE TAKEN OVER SCALED MEASUREMENTS.
2. ALL WALL THICKNESSES DIMENSIONED OR NOTED ARE NOMINAL SIZES ONLY.
3. INFORMATION INDICATED IN THIS DOCUMENT MAY BE CRUCIAL TO THE SAFE AND PROPER FUNCTIONINGS OF THE PROJECT. DO NOT ALTER ANY ASPECT WITHOUT REFERENCE TO THE ARCHITECT.
4. READ THIS DRAWING IN CONJUNCTION WITH RELEVANT CONSULTANT DRAWINGS AND SPECIFICATIONS.
5. INFORM THE ARCHITECT OF ANY DISCREPANCIES
6. THE WORK IS TO BE COMPLETED IN ACCORDANCE WITH THE NATIONAL CONSTRUCTION CODE OF AUSTRALIA, AUSTRALIAN STANDARDS, SAA CODES AND ALL RELEVANT CONDITIONS BY LAW
7. THE BUILDING / MANUFACTURER SHALL CHECK AND VERIFY ALL DIMENSIONS, RL, GROUNDLINES AND CONSTRUCTION METHODS PRIOR TO COMMENCEMENT OF WORK.
8. A COPY OF THIS PLAN IS TO BE SUBMITTED BY THE PROPRIETOR TO THE WATERBOARD FOR APPROVAL AS REQUIRED BY THE LOCAL COUNCIL.
9. THIS DRAWING IS PROTECTED BY COPYRIGHT. IT MAY ONLY BE USED FOR THE PURPOSE FOR WHICH IT IS ISSUED.